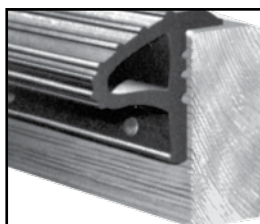


Drawings are not to scale.

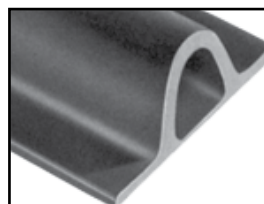
Marine Products

StanPro® Dock Bumpers



Heavy Duty Flanged Horizontal Dock Bumper

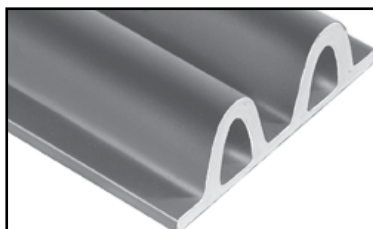
Part # 75000425
1-3/4" wide, 2-7/8" high w/o flange



Single Cushion Dock Bumper

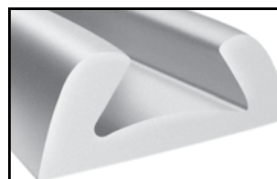
Part # 75000664
Regular - 2-3/8" wide, 1-3/8" high

Part # 75000660
Heavy Duty - 3-3/8" wide, 1-7/8" high



Heavy Duty Double Cushion Dock Bumper

Part # 75000659
4-1/4" wide, 1-7/16" high



Small Horizontal Dock Bumper

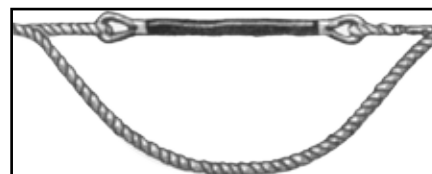
Part # 75000455
1-5/8" wide, 5/8" high

Other Products



Cradle Pad

Part # 75000685
3" wide, 5/8" high



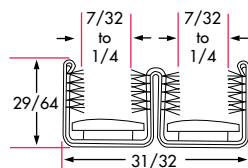
Mooring Snubber

Part # 75000413
22" long

Drawings are not to scale.

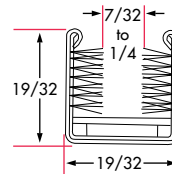
Marine Products

Stainless Steel Sliding Window Channel



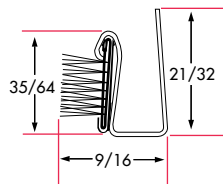
Double Rigid Channel
for double sliding windows. 96"

Part # 75000120



Single Rigid Channel
for single sliding windows. 96"

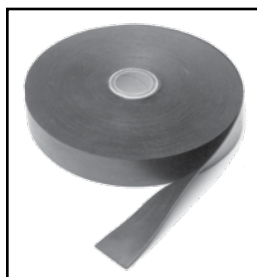
Part # 75000119



Edge Channel
Seals the opening between 2 windows of 3/16" or 1/4" thickness. For installation, use SealStrip® glass setting tape on edge of pane. 96"

Part # 75000081

SealStrip® Rubber Tape



SealStrip® Rubber Tape

Use to install StanPro Edge Weatherstrip Channel Part # 75000081. Place tape on 3/16" or 1/4" glass, hammer channel in place. Trim surplus tape. .025" x 1-1/2" x 100' roll.

Part # 75000662

